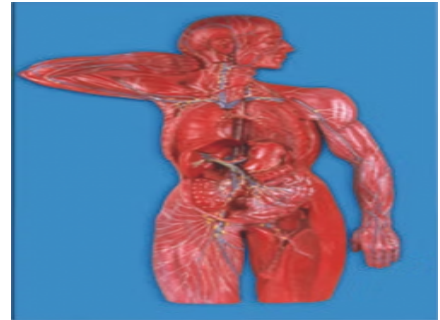


Labycare-Lymphatic System (SKSS-SE053)



Description :

Lymphatic System Model is an anatomical teaching aid used to demonstrate the structure of the human lymphatic system. It shows lymph nodes, vessels, spleen, and related organs. Widely used in medical and educational institutions, it helps students understand immune function, fluid balance, and body defense mechanisms clearly and effectively.

Specifications :

Type: Human anatomical model

Material: PVC/plastic with durable base

Structure: Shows lymph nodes, vessels, spleen, thymus

Mounting: Fixed on base or board

Size: Life-size or reduced scale

Labeling: Color-coded and clearly marked parts

labycare

www.labycare.com | Email: labycare@gmail.com