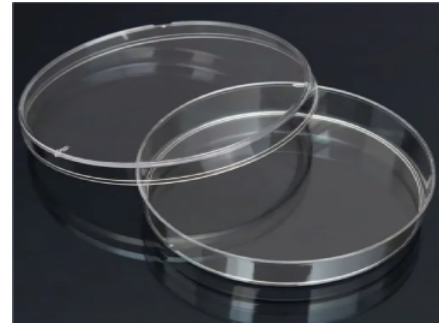


## Labycare-Petri Dish (SKSS-SE018)



### Petri Dish

#### **Description :**

A Petri dish is a shallow, circular laboratory container used for culturing microorganisms and observing biological samples. It consists of a base and a lid to prevent contamination. Commonly used in microbiology, it supports growth media like agar and allows easy monitoring of bacterial and fungal cultures.

#### **Specifications :**

Material: Glass / Polystyrene plastic

Diameter: 60 mm, 90 mm, 100 mm, 150 mm

Shape: Circular, shallow dish with lid

Sterility: Sterile (disposable) / Non-sterile (reusable glass)

Transparency: Clear for observation

Temperature Resistance: Up to ~120°C (glass types)

Stackable: Yes, space-saving design

---

labycare

[www.labycare.com](http://www.labycare.com) | Email: [labycare@gmail.com](mailto:labycare@gmail.com)