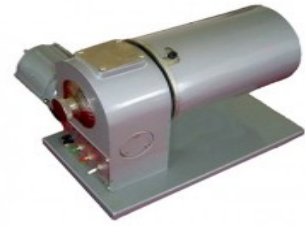


Labycare-Rice Broken Separator (SKSS-RLE2018)



Rice Broken Separator Manufacturer by LABYCARE

Description :

A “Rice Broken Separator Lab Model” is a specialized laboratory equipment designed for the separation of broken rice grains from whole rice grains. This device is often used in research and quality control settings to assess the quality of rice batches by separating broken grains, which can affect the overall quality and market value of the rice. The lab model is typically designed to be compact and efficient, allowing for precise separation with minimal grain loss. It helps in analyzing the percentage of broken rice in a given sample and is essential for maintaining high-quality rice standards in both production and research processes.

<u>Specifications :</u>	Capacity	50 gm/batch.
	Dimensions	24.5 x 34 x 20cm.
	Weight	12 kg Approx.
	Voltage	220V, 50hz, Single phase.
	Separating cylinder	13 x 20cm.
	Power	40W.
	Separation time	2 minutes ± 5 seconds.

labycare

www.labycare.com | Email: labycare@gmail.com